



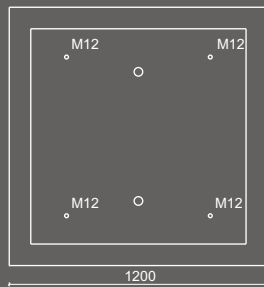
SPECIFICATIONS

MATERIAL	Cast stone
FIXING	Free-standing
WEIGHT	see table
FINISH	Fair faced / Micro etched / Polished / Velvet Waterproof and anti-graffiti protection



GEOMETRY

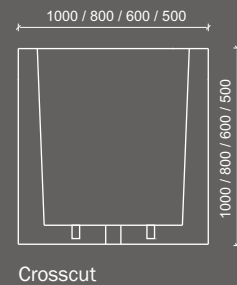
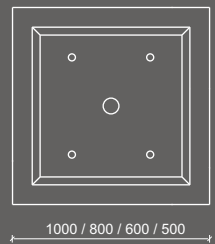
Top view



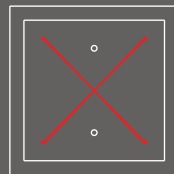
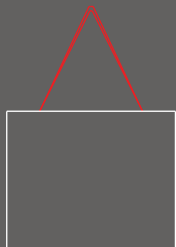
Crosscut



Top view



HANDLING



- Carree 120 - 120/120/50 cm - 10 cm thick - 950 kg
- Carree 100 - 100/100/100 cm - 10 cm thick - 1.017 kg
- Carree 80 - 80/80/80 cm - 8 cm thick - 522 kg
- Carree 60 - 60/60/60 cm - 6 cm thick - 230 kg
- Carree 50 - 50/50/50 cm - 5 cm thick - 110 kg

